

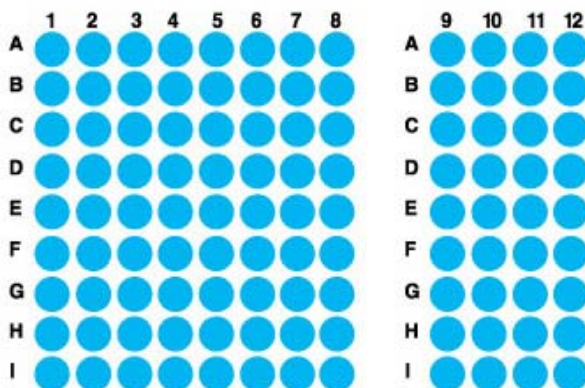
**Specifications:**

- No. of cases: 54
- Tissue type: Normal tissues – more than single spot
- No. of spots: 2 spots from each normal case (108 spots)
- Total spots: 108
- Diameter: 1.0 mm

**Documents:**

- Product specification: layout, summary of tissue spots
- H&E stained images
- Detailed pathological information

**Layout:**



**Summary of tissue spots**

NO.	Coordinate	Sex	Age	Key Word	
1	A	1	m	64	Cerebral cortex
2		2	m	64	Cerebral cortex
3		3	m	64	Cerebellum
4		4	m	64	Cerebellum
5		5	m	64	Basal ganglia
6		6	m	64	Basal ganglia
7		7	m	64	Hippocampus
8		8	m	64	Hippocampus
9		9	m	0	Spinal cord
10		10	m	1	Spinal cord
11		11	f	29	Peripheral nerve
12		12	f	30	Peripheral nerve
13	B	1	f	1	Spleen
14		2	f	1	Spleen
15		3	f	44	Tonsil
16		4	f	44	Tonsil
17		5	f	45	Thymus
18		6	f	45	Thymus
19		7	m	70	Fat
20		8	m	70	Lymph node
21		9	m	22	Blood vessel(Endothelium)
22		10	m	22	Blood vessel(Endothelium)
23		11	f	49	Skin
24		12	f	49	Skin
25	C	1	f	38	Breast
26		2	f	38	Breast
27		3	m	41	Salivary gland
28		4	m	41	Salivary gland
29		5	f	48	Thyroid gland
30		6	f	48	Thyroid gland
31		7	f	67	Adrenal cortex
32		8	f	67	Adrenal cortex
33		9	f	63	Adrenal medulla
34		10	f	63	Adrenal medulla
35		11	f	1	Pancreas
36		12	f	1	Pancreas

**Summary of tissue spots**

NO.	Coordinate	Sex	Age	Key Word	
37	D	1	m	64	Heart
38		2	m	64	Heart
39		3	m	69	Lung
40		4	m	69	Lung
41		5	m	69	Bronchus
42		6	m	69	Bronchus
43		7	m	55	Liver
44		8	m	55	Liver
45		9	f	46	Bile duct
46		10	f	46	Bile duct
47		11	f	31	Gallbladder
48		12	f	31	Gallbladder
49	E	1	f	54	Kidney (Cortex)
50		2	f	54	Kidney (Cortex)
51		3	f	54	Kidney (Medulla)
52		4	f	54	Kidney (Medulla)
53		5	m	18	Ureter
54		6	m	18	Ureter
55		7	m	45	Bladder
56		8	m	45	Bladder
57		9	m	52	Prostate
58		10	m	52	Prostate
59		11	m	20	Testis
60		12	m	20	Testis
61	F	1	f	27	Ovary
62		2	f	27	Ovary
63		3	f	45	Uterus (Excervix)
64		4	f	45	Uterus (Excervix)
65		5	f	45	Uterus (Endocervix)
66		6	f	45	Uterus (Endocervix)
67		7	f	44	Uterus (Pro-Endometrium)
68		8	f	44	Uterus (Pro-Endometrium)
69		9	f	53	Uterus (Sec-Endometrium)
70		10	f	53	Uterus (Sec-Endometrium)
71		11	f	32	Uterus (Decidua)
72		12	f	32	Uterus (Decidua)

**Summary of tissue spots**

NO.	Coordinate	Sex	Age	Key Word	
73	G	1	f	71	Uterus (Myometrium)
74		2	f	71	Uterus (Myometrium)
75		3	f	34	Fallopian tube
76		4	f	34	Fallopian tube
77		5	f	40	Placenta (Amnio)
78		6	f	40	Placenta (Amnio)
79		7	f	40	Placenta (Chorion villi)
80		8	f	40	Placenta (Chorion villi)
81		9	f	40	Placenta (Basal plate)
82		10	f	40	Placenta (Basal plate)
83		11	f	29	Umbilical cord
84		12	f	29	Umbilical cord
85	H	1	f	42	Esophagus
86		2	f	42	Esophagus
87		3	f	37	Intestinal metaplasia
88		4	f	37	Intestinal metaplasia
89		5	f	46	Stomach(Fundic gland)
90		6	f	46	Stomach(Fundic gland)
91		7	m	66	Stomach(Pyloric gland)
92		8	m	66	Stomach(Pyloric gland)
93		9	f	65	Duodenum
94		10	f	65	Duodenum
95		11	m	66	Jeuni
96		12	m	66	Jeuni
97	I	1	m	46	Ileum
98		2	m	46	Ileum
99		3	m	43	Appendix
100		4	m	43	Appendix
101		5	m	36	Colon
102		6	m	36	Colon
103		7	m	69	Rectum
104		8	m	69	Rectum
105		9	m	46	Cecum
106		10	m	46	Cecum
107		11	m	59	Skeletal muscle
108		12	m	59	Skeletal muscle

**QC sheet\_LOT#112120309251**  
**Haematoxylin and Eosin staining**



A1



A2



A3



A4



A5



A6



A7



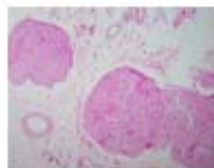
A8



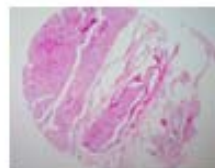
A9



A10



A11



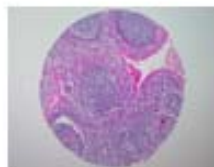
A12



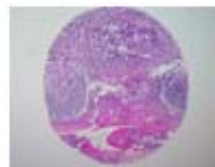
B1



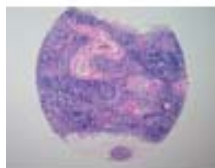
B2



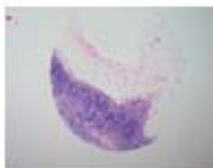
B3



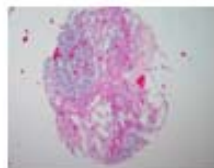
B4



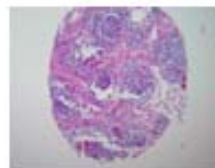
B5



B6



B7



B8



B9



B10



B11



B12

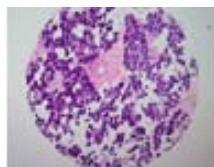
**QC sheet\_LOT#112120309251**  
**Haematoxylin and Eosin staining**



C1



C2



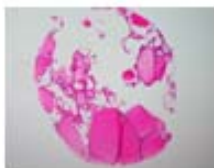
C3



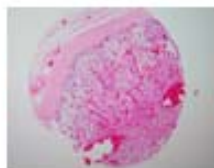
C4



C5



C6



C7



C8



C9



C10



C11



C12



D1



D2



D3



D4



D5



D6



D7



D8



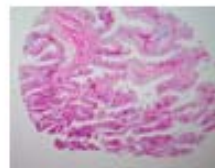
D9



D10



D11



D12

**QC sheet\_LOT#112120309251**  
**Haematoxylin and Eosin staining**



E1



E2



E3



E4



E5



E6



E7



E8



E9



E10



E11



E12



F1



F2



F3



F4



F5



F6



F7



F8



F9



F10



F11



F12

**QC sheet\_LOT#112120309251**  
**Haematoxylin and Eosin staining**



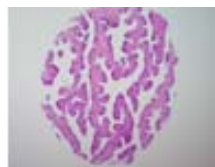
G1



G2



G3



G4



G5



G6



G7



G8



G9



G10



G11



G12



H1



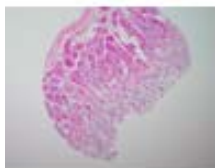
H2



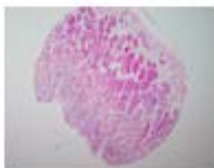
H3



H4



H5



H6



H7



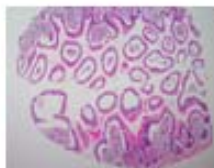
H8



H9



H10



H11



H12

**QC sheet\_LOT#112120309251**  
**Haematoxylin and Eosin staining**



I 1



I 2



I 3



I 4



I 5



I 6



I 7



I 8



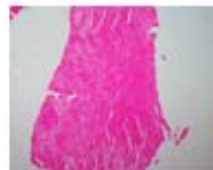
I 9



I 10



I 11



I 12

**A103: Normal tissues, more than single spot**

No.	Coordinate		Sex	Age	Key Word	Histological Diagnosis
1	A	1	m	64	Cerebral cortex	non-neoplastic
2	A	2	m	64	Cerebral cortex	non-neoplastic
3	A	3	m	64	Cerebellum	non-neoplastic
4	A	4	m	64	Cerebellum	non-neoplastic
5	A	5	m	64	Basal ganglia	non-neoplastic
6	A	6	m	64	Basal ganglia	non-neoplastic
7	A	7	m	64	Hippocampus	non-neoplastic
8	A	8	m	64	Hippocampus	non-neoplastic
9	A	9	m	0	Spinal cord	non-neoplastic
10	A	10	m	1	Spinal cord	non-neoplastic
11	A	11	f	29	Peripheral nerve	non-neoplastic
12	A	12	f	30	Peripheral nerve	non-neoplastic
13	B	1	f	1	Spleen	non-neoplastic
14	B	2	f	1	Spleen	non-neoplastic
15	B	3	f	44	Tonsil	non-neoplastic
16	B	4	f	44	Tonsil	non-neoplastic
17	B	5	f	45	Thymus	non-neoplastic
18	B	6	f	45	Thymus	non-neoplastic
19	B	7	m	70	Fat	non-neoplastic
20	B	8	m	70	Lymph node	non-neoplastic
21	B	9	m	22	Blood vessel(Endothelium)	non-neoplastic
22	B	10	m	22	Blood vessel(Endothelium)	non-neoplastic
23	B	11	f	49	Skin	non-neoplastic
24	B	12	f	49	Skin	non-neoplastic
25	C	1	f	38	Breast	non-neoplastic
26	C	2	f	38	Breast	non-neoplastic
27	C	3	m	41	Salivary gland	non-neoplastic
28	C	4	m	41	Salivary gland	non-neoplastic
29	C	5	f	48	Thyroid gland	non-neoplastic
30	C	6	f	48	Thyroid gland	non-neoplastic

**A103: Normal tissues, more than single spot**

No.	Coordinate		Sex	Age	Key Word	Histological Diagnosis
31	C	7	f	67	Adrenal cortex	non-neoplastic
32	C	8	f	67	Adrenal cortex	non-neoplastic
33	C	9	f	63	Adrenal medulla	non-neoplastic
34	C	10	f	63	Adrenal medulla	non-neoplastic
35	C	11	f	1	Pancreas	non-neoplastic
36	C	12	f	1	Pancreas	non-neoplastic
37	D	1	m	64	Heart	non-neoplastic
38	D	2	m	64	Heart	non-neoplastic
39	D	3	m	69	Lung	non-neoplastic
40	D	4	m	69	Lung	non-neoplastic
41	D	5	m	69	Bronchus	non-neoplastic
42	D	6	m	69	Bronchus	non-neoplastic
43	D	7	m	55	Liver	non-neoplastic
44	D	8	m	55	Liver	non-neoplastic
45	D	9	f	46	Bile duct	non-neoplastic
46	D	10	f	46	Bile duct	non-neoplastic
47	D	11	f	31	Gallbladder	non-neoplastic
48	D	12	f	31	Gallbladder	non-neoplastic
49	E	1	f	54	Kidney (Cortex)	non-neoplastic
50	E	2	f	54	Kidney (Cortex)	non-neoplastic
51	E	3	f	54	Kidney (Medulla)	non-neoplastic
52	E	4	f	54	Kidney (Medulla)	non-neoplastic
53	E	5	m	18	Ureter	non-neoplastic
54	E	6	m	18	Ureter	non-neoplastic
55	E	7	m	45	Bladder	non-neoplastic
56	E	8	m	45	Bladder	non-neoplastic
57	E	9	m	52	Prostate	non-neoplastic
58	E	10	m	52	Prostate	non-neoplastic
59	E	11	m	20	Testis	non-neoplastic
60	E	12	m	20	Testis	non-neoplastic

**A103: Normal tissues, more than single spot**

No.	Coordinate		Sex	Age	Key Word	Histological Diagnosis
61	F	1	f	27	Ovary	non-neoplastic
62	F	2	f	27	Ovary	non-neoplastic
63	F	3	f	45	Uterus (Excervix)	non-neoplastic
64	F	4	f	45	Uterus (Excervix)	non-neoplastic
65	F	5	f	45	Uterus (Endocervix)	non-neoplastic
66	F	6	f	45	Uterus (Endocervix)	non-neoplastic
67	F	7	f	44	Uterus (Pro-Endometrium)	non-neoplastic
68	F	8	f	44	Uterus (Pro-Endometrium)	non-neoplastic
69	F	9	f	53	Uterus (Sec-Endometrium)	non-neoplastic
70	F	10	f	53	Uterus (Sec-Endometrium)	non-neoplastic
71	F	11	f	32	Uterus (Decidua)	non-neoplastic
72	F	12	f	32	Uterus (Decidua)	non-neoplastic
73	G	1	f	71	Uterus (Myometrium)	non-neoplastic
74	G	2	f	71	Uterus (Myometrium)	non-neoplastic
75	G	3	f	34	Fallopian tube	non-neoplastic
76	G	4	f	34	Fallopian tube	non-neoplastic
77	G	5	f	40	Placenta (Amnio)	non-neoplastic
78	G	6	f	40	Placenta (Amnio)	non-neoplastic
79	G	7	f	40	Placenta (Chorion villi)	non-neoplastic
80	G	8	f	40	Placenta (Chorion villi)	non-neoplastic
81	G	9	f	40	Placenta (Basal plate)	non-neoplastic
82	G	10	f	40	Placenta (Basal plate)	non-neoplastic
83	G	11	f	29	Umbilical cord	non-neoplastic
84	G	12	f	29	Umbilical cord	non-neoplastic
85	H	1	f	42	Esophagus	non-neoplastic
86	H	2	f	42	Esophagus	non-neoplastic
87	H	3	f	37	Intestinal metaplasia	non-neoplastic
88	H	4	f	37	Intestinal metaplasia	non-neoplastic
89	H	5	f	46	Stomach(Fundic gland)	non-neoplastic
90	H	6	f	46	Stomach(Fundic gland)	non-neoplastic

**A103: Normal tissues, more than single spot**

No.	Coordinate		Sex	Age	Key Word	Histological Diagnosis
91	H	7	m	66	Stomach(Pyloric gland)	non-neoplastic
92	H	8	m	66	Stomach(Pyloric gland)	non-neoplastic
93	H	9	f	65	Duodenum	non-neoplastic
94	H	10	f	65	Duodenum	non-neoplastic
95	H	11	m	66	Jeuni	non-neoplastic
96	H	12	m	66	Jeuni	non-neoplastic
97	I	1	m	46	Ileum	non-neoplastic
98	I	2	m	46	Ileum	non-neoplastic
99	I	3	m	43	Appendix	non-neoplastic
100	I	4	m	43	Appendix	non-neoplastic
101	I	5	m	36	Colon	non-neoplastic
102	I	6	m	36	Colon	non-neoplastic
103	I	7	m	69	Rectum	non-neoplastic
104	I	8	m	69	Rectum	non-neoplastic
105	I	9	m	46	Cecum	non-neoplastic
106	I	10	m	46	Cecum	non-neoplastic
107	I	11	m	59	Skeletal muscle	non-neoplastic
108	I	12	m	59	Skeletal muscle	non-neoplastic