

(formalin fixed)

For research use only

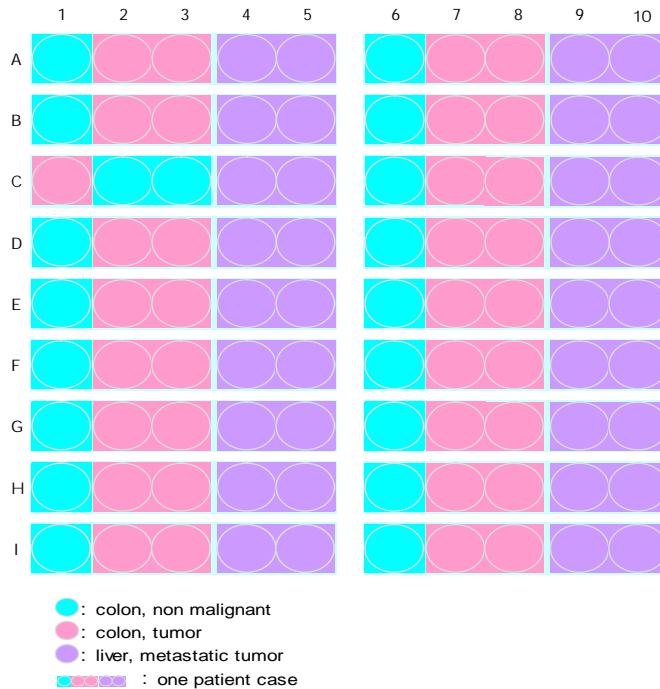
**Specifications:**

- No. of cases: 18
- Tissue type: Colon cancer tissues\_liver metastasis with corresponding colon normal tissues
- No. of spots: 4 spots from each cancer case (72 spots)  
18 non-neoplastic spots (18 spots)
- Total spots: 90
- Corresponding normal tissues with cancers: Yes
- Diameter: 1.0 mm

**Documents:**

- Product specification: layout, summary of tissue spots
- H&E stained images
- Detailed pathological information

**Layout:**



(formalin fixed)

For research use only

**Summary of tissue spots**

No.	Coordinate	Sex	Age	Key word
1	1	m	73	non-noeplastic from A2,3
	2,3			colon: adenocarcinoma
	4,5			liver metastasis form A2,3
2	6	m	58	non-noeplastic from A7,8
	7,8			colon: adenocarcinoma
	9,10			liver metastasis form A7,8
3	1	m	56	non-noeplastic from B2,3
	2,3			colon: adenocarcinoma
	4,5			liver metastasis form B2,3
4	6	f	65	non-noeplastic from B7,8
	7,8			colon: adenocarcinoma
	9,10			liver metastasis form B7,8
5	1	m	48	colon: adenocarcinoma
	2,3			non-noeplastic from C1
	4,5			liver metastasis form C1
6	6	m	47	non-noeplastic from C7,8
	7,8			colon: adenocarcinoma
	9,10			liver metastasis form C7,8
7	1	f	72	non-noeplastic from D2,3
	2,3			colon: adenocarcinoma
	4,5			liver metastasis form D2,3
8	6	f	53	non-noeplastic from D7,8
	7,8			colon: adenocarcinoma
	9,10			liver metastasis form D7,8
9	1	m	68	non-noeplastic from E2,3
	2,3			colon: adenocarcinoma
	4,5			liver metastasis form E2,3
10	6	m	59	non-noeplastic from E7,8
	7,8			colon: adenocarcinoma
	9,10			liver metastasis form E7,8

(formalin fixed)

For research use only

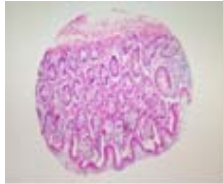
**Summary of tissue spots**

No.	Coordinate	Sex	Age	Key word
11	1	m	34	non-noeplastic from F2,3
	2,3			colon: adenocarcinoma
	4,5			liver metastasis form F2,3
12	6	m	72	non-noeplastic from F7,8
	7,8			colon: adenocarcinoma
	9,10			liver metastasis form F7,8
13	1	m	78	non-noeplastic from G2,3
	2,3			colon: adenocarcinoma
	4,5			liver metastasis form G2,3
14	6	m	55	non-noeplastic from G7,8
	7,8			colon: adenocarcinoma
	9,10			liver metastasis form G7,8
15	1	m	47	non-noeplastic from H2,3
	2,3			colon: adenocarcinoma
	4,5			liver metastasis form H2,3
16	6	f	27	non-noeplastic from H7,8
	7,8			colon: adenocarcinoma
	9,10			liver metastasis form H7,8
17	1	f	64	non-noeplastic from I2,3
	2,3			colon: adenocarcinoma
	4,5			liver metastasis form I2,3
18	6	m	74	non-noeplastic from I7,8
	7,8			colon: adenocarcinoma
	9,10			liver metastasis form I7,8

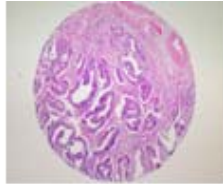
(formalin fixed)

For research use only

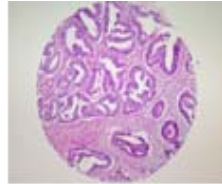
**QC sheet\_LOT#122150410051**  
**Hematoxylin and Eosin staining**



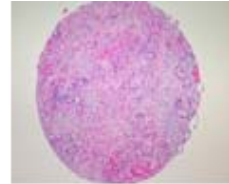
A1



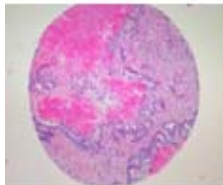
A2



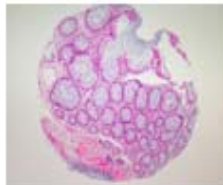
A3



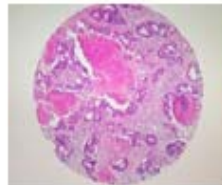
A4



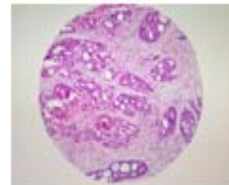
A5



A6



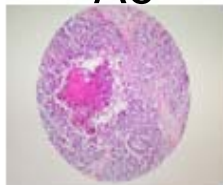
A7



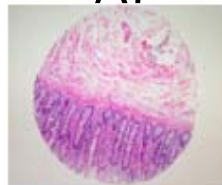
A8



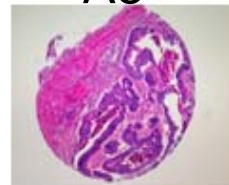
A9



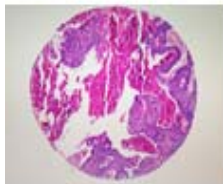
A10



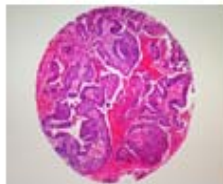
B1



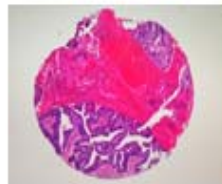
B2



B3



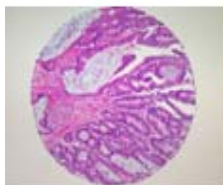
B4



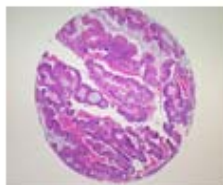
B5



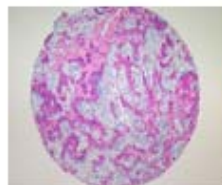
B6



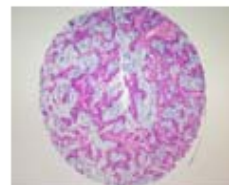
B7



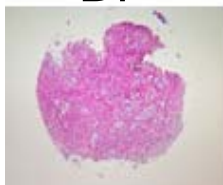
B8



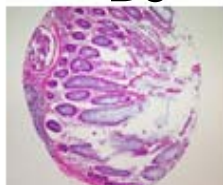
B9



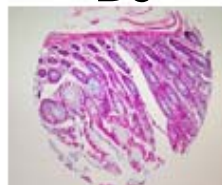
B10



C1



C2



C3

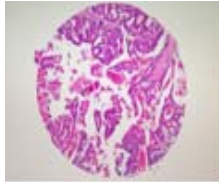


C4

(formalin fixed)

For research use only

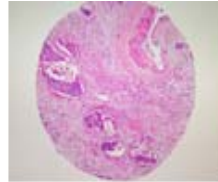
**QC sheet\_LOT#122150410051**  
**Hematoxylin and Eosin staining**



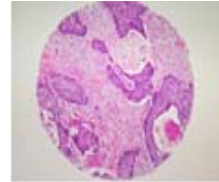
C5



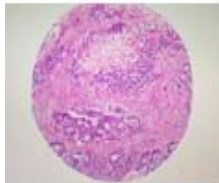
C6



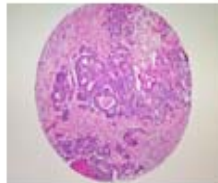
C7



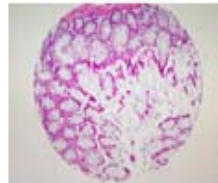
C8



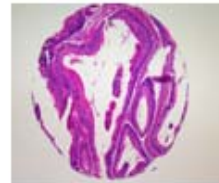
C9



C10



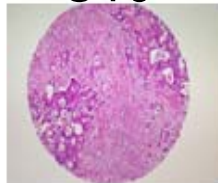
D1



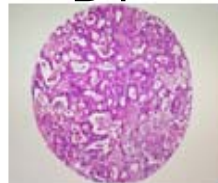
D2



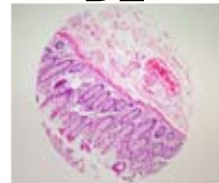
D3



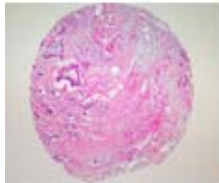
D4



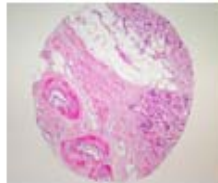
D5



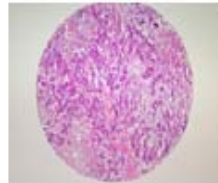
D6



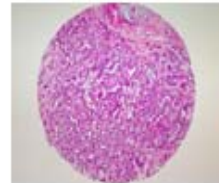
D7



D8



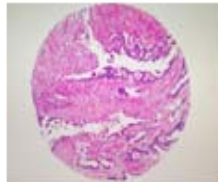
D9



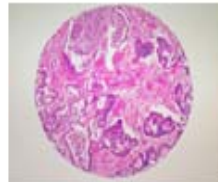
D10



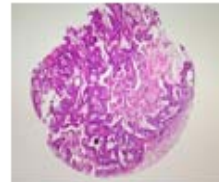
E1



E2



E3



E4



E5



E6



E7

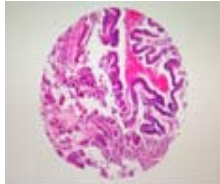


E8

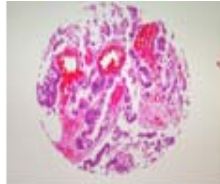
(formalin fixed)

For research use only

QC sheet\_LOT#122150410051  
Hematoxylin and Eosin staining



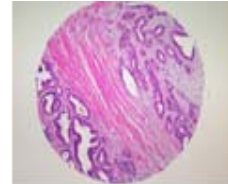
E9



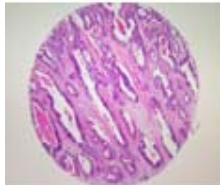
E10



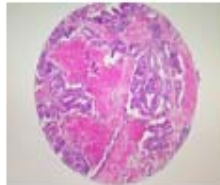
F1



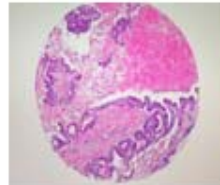
F2



F3



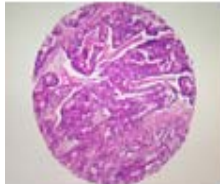
F4



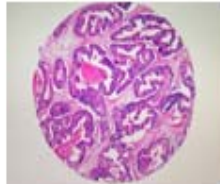
F5



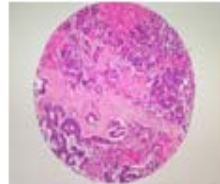
F6



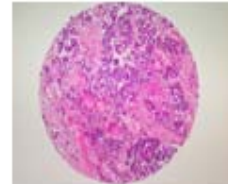
F7



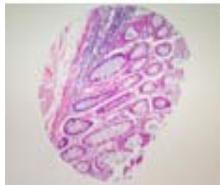
F8



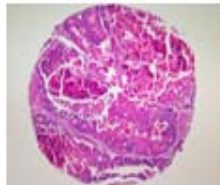
F9



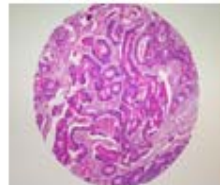
F10



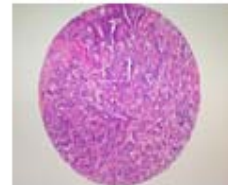
G1



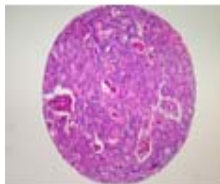
G2



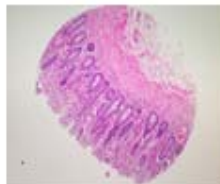
G3



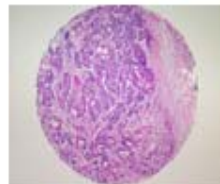
G4



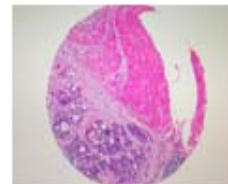
G5



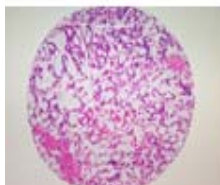
G6



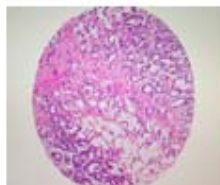
G7



G8



G9



G10



H1

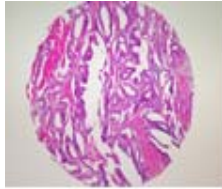


H2

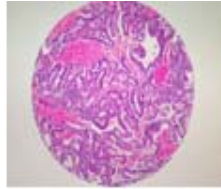
(formalin fixed)

For research use only

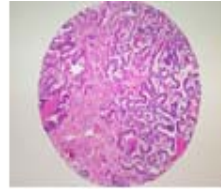
**QC sheet\_LOT#122150410051**  
**Hematoxylin and Eosin staining**



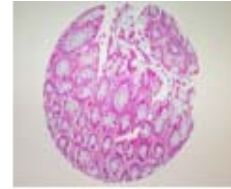
**H3**



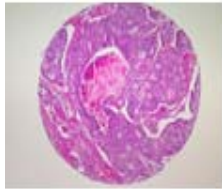
**H4**



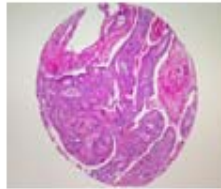
**H5**



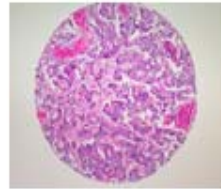
**H6**



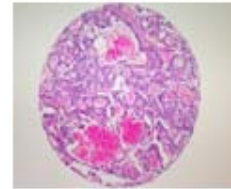
**H7**



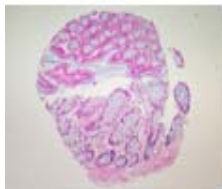
**H8**



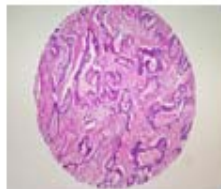
**H9**



**H10**



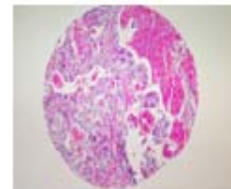
**I1**



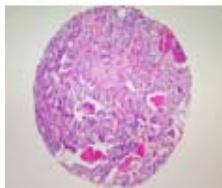
**I2**



**I3**



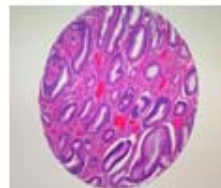
**I4**



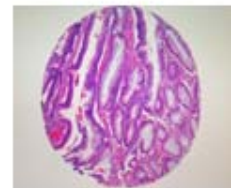
**I5**



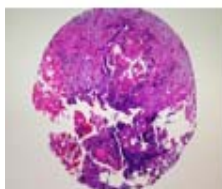
**I6**



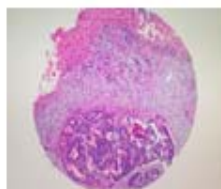
**I7**



**I8**



**I9**



**I10**

**A203(II): Colon cancer tissues \_liver metastasis**

No.	Coordinate	Sex	Age	Key word	Differentiation	Dukes stage	liver metastasis (cm)	colon operation	Liver operation	Lymph node	
1	A	m	73	1	non-noeplastic from A2,3						
				2,3	colon: adenocarcinoma	moderate	C2		right hemicolectomy		5/28
				4,5	liver metastasis form A2,3			2.4		segmental resection	
2	A	m	58	6	non-noeplastic from A7,8						
				7,8	colon: adenocarcinoma	moderate	C2		Miles' operation		8/11
				9,10	liver metastasis form A7,8			2/2/0.6		wedge resection x3	
3	B	m	56	1	non-noeplastic from B2,3						
				2,3	colon: adenocarcinoma	moderate	C2		low anterior resection		4/21
				4,5	liver metastasis form B2,3			0.6		wedge resection	
4	B	f	65	6	non-noeplastic from B7,8						
				7,8	colon: adenocarcinoma	moderate	C2		right hemicolectomy		2/35
				9,10	liver metastasis form B7,8			2		left lateral segmentectomy	
5	C	m	48	1	colon: adenocarcinoma	moderate	B2		right hemicolectomy		
				2,3	non-noeplastic from C1					right lobectomy	
				4,5	liver metastasis form C1			3			
6	C	m	47	6	non-noeplastic from C7,8						
				7,8	colon: adenocarcinoma	moderate	C2		low anterior resection		3/21
				9,10	liver metastasis form C7,8			2.7		segmental resection	
7	D	f	72	1	non-noeplastic from D2,3						
				2,3	colon: adenocarcinoma	moderate	C2		low anterior resection		1/15
				4,5	liver metastasis form D2,3			2		right lobectomy	
8	D	f	53	6	non-noeplastic from D7,8						
				7,8	colon: adenocarcinoma	moderate	C2		segmental resection		8/11
				9,10	liver metastasis form D7,8			1.3		segmental resection	
9	E	m	68	1	non-noeplastic from E2,3						
				2,3	colon: adenocarcinoma	moderate	B2		Miles' operation		
				4,5	liver metastasis form E2,3			?		left lobectomy	
10	E	m	59	6	non-noeplastic from E7,8						
				7,8	colon: adenocarcinoma	moderate	C2		low anterior resection		3/12
				9,10	liver metastasis form E7,8			2, 0.5		segmentectomy x2	

No.	Coordinate	Sex	Age	Key word	Differentiation	Dukes stage	liver metastasis (cm)	colon operation	Liver operation	Lymph node
11	F	m	34	1	non-noeplastic from F2,3					
				2,3	colon: adenocarcinoma	moderate	C2			2/16
				4,5	liver metastasis form F2,3			4		left lateral segmentectomy
12	F	m	72	6	non-noeplastic from F7,8					
				7,8	colon: adenocarcinoma	moderate	C2		low anterior resection	3/16
				9,10	liver metastasis form F7,8			1		segmental resection
13	G	m	78	1	non-noeplastic from G2,3					
				2,3	colon: adenocarcinoma	poorly	B2		low anterior resection	
				4,5	liver metastasis form G2,3			0.4/2.5		segmental resection
14	G	m	55	6	non-noeplastic from G7,8					
				7,8	colon: adenocarcinoma	moderate	C2		low anterior resection	12/15
				9,10	liver metastasis form G7,8			1		Biopsy
15	H	m	47	1	non-noeplastic from H2,3					
				2,3	colon: adenocarcinoma	moderate	B2		low anterior resection	
				4,5	liver metastasis form H2,3			7.8		triseq
16	H	f	27	6	non-noeplastic from H7,8					
				7,8	colon: adenocarcinoma	moderate	C2		anterior resection	6/26
				9,10	liver metastasis form H7,8			5.5		right lobectomy
17	I	f	64	1	non-noeplastic from I2,3					
				2,3	colon: adenocarcinoma	moderate	C2		anterior resection	2/7
				4,5	liver metastasis form I2,3			1.8		segmental resection
18	I	m	74	6	non-noeplastic from I7,8					
				7,8	colon: adenocarcinoma	moderate	B1		low anterior resection	
				9,10	liver metastasis form I7,8			0.7		biopsy