

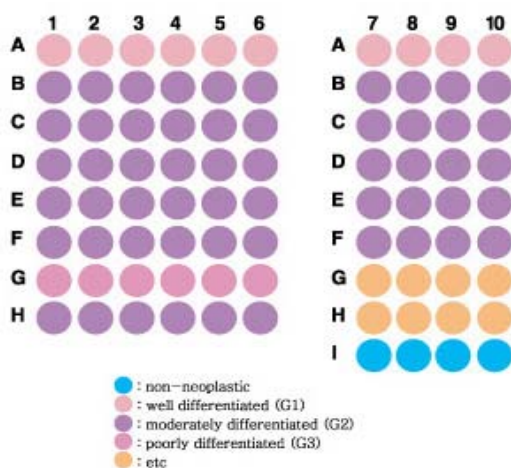
Specifications:

- No. of cases: 40
- Tissue type: Esophagus cancer tissues
- No. of spots: 2 spots from each cancer case (80 spots)
4 non-neoplastic spots (4 spots)
- Total spots: 84
- Corresponding normal tissues with cancers: Yes
- Diameter: 1.0 mm

Documents:

- Product specification: layout, summary of tissue spots
- H&E stained images
- Detailed pathological information

Layout:



Summary of tissue spots

No.	Coordinate	Sex	Age	Key Word	Type	TNM Stage	Tumor Size (cm)
1	1,2	m	66	squamous cell carcinoma	well	T3N1M0 (III)	8.0*7.0
2	3,4	m	67	squamous cell carcinoma	well	T1N1M0 (II B)	2.8*1.7
3	5,6	m	69	squamous cell carcinoma squamous cell carcinoma in situ anthracosis	well	T1N0M0 (I)	3.0*2.0
4	7,8	m	60	squamous cell carcinoma	well	T1N0M0 (I)	4.5*2.5
5	9,10	m	50	squamous cell carcinoma	well	T1N0M0 (I)	3.8*1.5
6	1,2	m	79	squamous cell carcinoma	moderate	T3N1M0 (III)	3.0*3.0
7	3,4	m	59	squamous cell carcinoma carcinoma in situ	moderate	T3N1M1 (IV)	5.3*2.5
8	5,6	m	54	squamous cell carcinoma dysplasia	moderate	T1N1M0 (II B)	1.7*1.0
9	7,8	m	69	squamous cell carcinoma	moderate	T1N0M0 (I)	2.0*1.5
10	9,10	m	55	squamous cell carcinoma	moderate	T1N0M0 (I)	1.8*1.0
11	1,2	m	73	squamous cell carcinoma	moderate	T3N1M0 (III)	5.0*5.0
12	3,4	m	63	squamous cell carcinoma squamous cell carcinoma in situ	moderate	T4N0M0 (III)	2.8*1.7
13	5,6	m	57	squamous cell carcinoma	moderate	T2N1M0 (II B)	5.5*5.0
14	7,8	m	58	squamous cell carcinoma	moderate	T2N1M1 (IV)	4.0*3.0*1.0
15	9,10	m	75	esophagus squamous cell carcinoma stomach adenocarcinoma stomach signet ring cell carcinoma stomach tubular adenoma	moderate	T3N1M0 (III)	4.5*3.5
16	1,2	f	64	squamous cell carcinoma	moderate	T3N0M0 (II A)	4
17	3,4	f	58	squamous cell carcinoma	moderate	T2N0M0 (II A)	4.5*2.5
18	5,6	m	67	squamous cell carcinoma	moderate	T2N0M0 (II A)	2.3*1.3
19	7,8	m	77	squamous cell carcinoma	moderate	T3N0M0 (II A)	2.5*2.0
20	9,10	m	69	squamous cell carcinoma	moderate	T2N1M0 (II B)	3.5*2.3*1.4
21	1,2	m	61	squamous cell carcinoma	moderate	T3N0M1a (IVA)	1.3*0.6
22	3,4	m	56	squamous cell carcinoma	moderate	T1N0M1a (IVA)	3.0*3.0
23	5,6	m	68	squamous cell carcinoma	moderate	T2N0M0 (II A)	5.5*4.5
24	7,8	m	61	squamous cell carcinoma	moderate	T3N1M0 (III)	7.0*2.7
25	9,10	m	60	squamous cell carcinoma	moderate	T4N0M0 (III)	3.0*2.0*1.0
26	1,2	m	71	squamous cell carcinoma GIST	moderate	T1N0M0 (I)	8.0*3.0
27	3,4	m	61	squamous cell carcinoma	moderate	T1N0M0 (I)	3.0*2.0
28	5,6	m	62	squamous cell carcinoma	moderate	T1N1M0 (II B)	4.0*3.5
29	7,8	m	60	squamous cell carcinoma leiomyoma	moderate	T3N1M0 (III)	7.0*4.7
30	9,10	m	62	squamous cell carcinoma	poorly	T2N0M0 (II A)	2.0*1.3

Summary of tissue spots

No.	Coordinate	Sex	Age	Key Word	Type	TNM Stage	Tumor Size (cm)
31	1,2	m	66	squamous cell carcinoma	poorly	T3N0M1a (IVA)	3.1*2.0
32	3,4	m	73	squamous cell carcinoma	poorly	T1N0M0 (I)	9.5
33	5,6	m	56	squamous cell carcinoma	poorly	T3N1M0 (III)	7.0*6.0
34	7,8	m	69	squamous cell carcinoma		T2N1M0 (II B)	3.5*2.3*1.4
35	9,10	m	73	squamous cell carcinoma sarcoma malignant fibrous histiocytoma double cancer			3.2*2.4*1.0
36	1,2	m	70	squamous cell carcinoma	moderately -well	T1N0M1 (IV)	3.0*2.7
37	3,4	m	68	squamous cell carcinoma	moderately -well	T3N1M0 (III)	4.0*3.0
38	5,6	m	71	squamous cell carcinoma	moderately to poorly	T3N0M0 (II A)	4.0*1.5
39	7,8	m	80	squamous cell carcinoma		T1N1M0 (II B)	5.0*4.8
40	9,10	m	68	squamous cell carcinoma		T1N0M0 (I)	1
41	7			non-neoplastic, from A3, 4			
42	8			non-neoplastic, from E5, 6			
43	9			non-neoplastic, from D9,10			
44	10			non-neoplastic, from G1, 2			

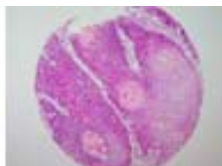
QC sheet_LOT#122120311031
Hematoxylin and Eosin staining



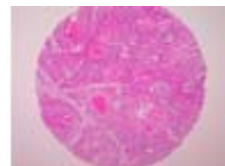
A1



A2



A3



A4



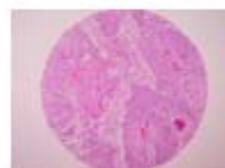
A5



A6



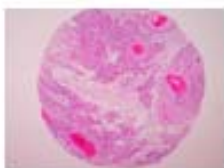
A7



A8



A9



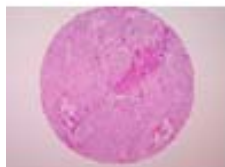
A10



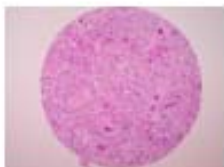
B1



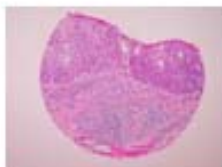
B2



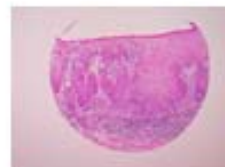
B3



B4



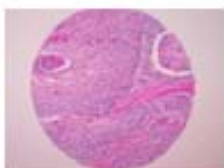
B5



B6



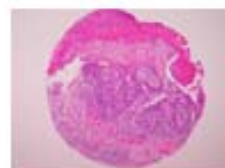
B7



B8



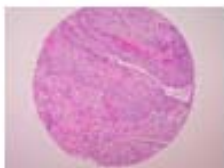
B9



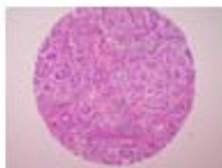
B10



C1



C2

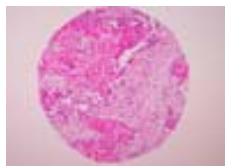


C3

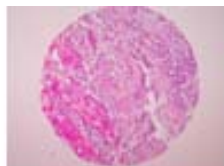


C4

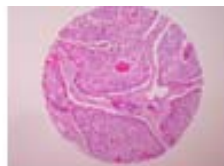
QC sheet_LOT#122120311031
Hematoxylin and Eosin staining



C5



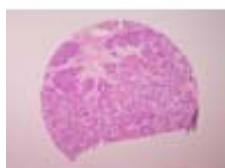
C6



C7



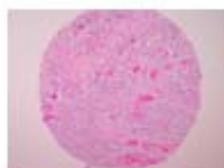
C8



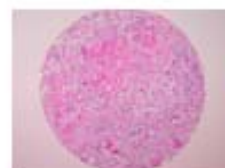
C9



C10



D1



D2



D3



D4



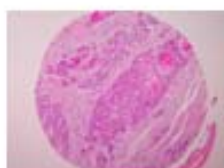
D5



D6



D7



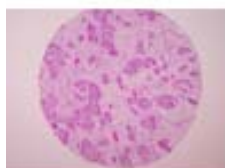
D8



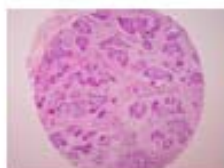
D9



D10



E1



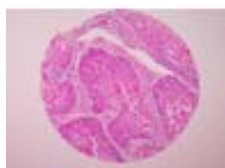
E2



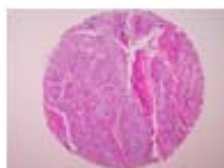
E3



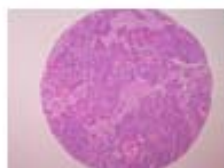
E4



E5



E6



E7



E8

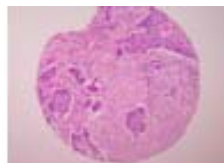
QC sheet_LOT#122120311031
Hematoxylin and Eosin staining



E9



E10



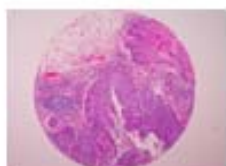
F1



F2



F3



F4



F5



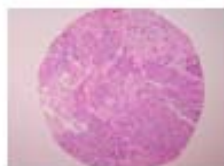
F6



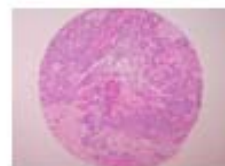
F7



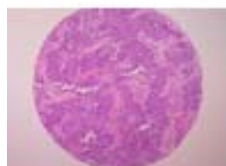
F8



F9



F10



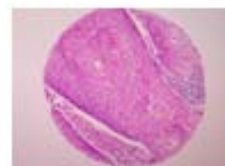
G1



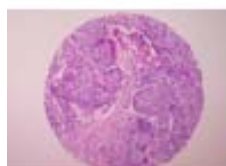
G2



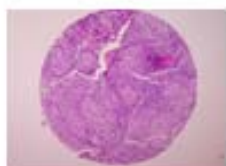
G3



G4



G5



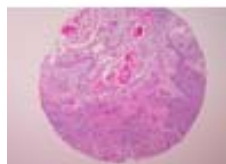
G6



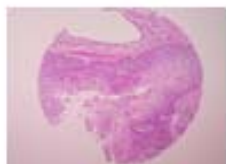
G7



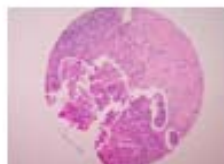
G8



G9



G10



H1



H2

QC sheet_LOT#122120311031
Hematoxylin and Eosin staining



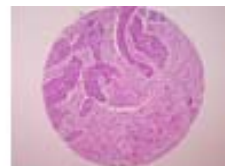
H3



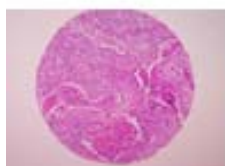
H4



H5



H6



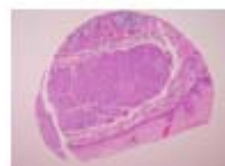
H7



H8



H9



H10



I7



I8



I9



I10

A218 : Esophagus cancer tissues

No	Coordinate	Sex	Age	Key word	Histological Diagnosis	Type	TNM Stage	Tumor size (cm)
1	A 1,2	m	66	squamous cell carcinoma	1. Esophagus: 1) squamous cell carcinoma, well differentiated, ulceroinfiltrative, extension to subserosal fat tissue arising from esophagus 2) resection margin, proximal: extension of tumor 2. Jejunal margin: free of tumor 3. Separately submitted segment of small bowel: free of tumor 4. Pancreas: free of tumor 5. Spleen: free of tumor 6. Regional lymph nodes, N3 (1/13), N4 (0/1), N8 (0/2), N10 (0/1), (1/17): metastasis in 1 out of 17 nodes 7. Soft tissue labelled as N1,N2: absence of node 8. Pancreas and spleen labelled as N10 AND N11: 1) ectopic pancreas 2) accessory spleen	well	T3N1M0 (III)	8.0*7.0
2	A 3,4	m	67	squamous cell carcinoma	Esophagus, segmental resection: 1) squamous cell carcinoma, well differentiated with extension to submucosa 2) benign stromal tumor, gastroesophageal junction 3) resection margin: free of tumor 4) lymph node, regional: metastatic squamous cell carcinoma in one out of 12. (paraesophageal (0/1), inferior pulmonary (0/1), subscalular (0/3), perigastric (1/7))	well	T1N1M0 (II B)	2.8*1.7
3	A 5,6	m	69	squamous cell carcinoma squamous cell carcinoma in situ anthracosis	1. Esophagus, esophagectomy: fungating squamous cell carcinoma, well differentiated with focal necrosis with 1) tumor extension to the submucosa 2) no lymphovascular permeation 3) no perineural invasion 4) adjacent squamous cell carcinoma in situ 5) resection margins, proximal and distal: free of tumor 2. Regional lymph nodes, paraaortic (0/2), inferior pulmonary ligament (0/3), hilar (0/8), paraesophageal (0/2) : (0/15): 1) free of tumor in all 15 lymph nodes 2) anthracosilicosis 3. Soft tissue, labelled as "paraspinal mass": myelolipoma 4. Omentum: free of tumor	well	T1N0M0 (I)	3.0*2.0
4	A 7,8	m	60	squamous cell carcinoma	Esophagus, esophagectomy: 1) fungating squamous cell carcinoma, well differentiated, with extension to the outer 1/3 of lamina propria no lymphovascular permeation 2) resection margins, proximal and distal: free of tumor 3) regional lymph nodes: free of tumor (0/1)	well	T1N0M0 (I)	4.5*2.5

A218 : Esophagus cancer tissues

No	Coordinate		Sex	Age	Key word	Histological Diagnosis	Type	TNM Stage	Tumor size (cm)
5	A	9,10	m	50	squamous cell carcinoma	Esophagus, esophagectomy: 1) squamous cell carcinoma, well-differentiated, fungating type, extending into submucosa without proper muscle involvement 2) resection margins, proximal and distal: free of tumor 3) regional lymph node (0/4): free of tumor	well	T1N0M0 (I)	3.8*1.5
6	B	1,2	m	79	squamous cell carcinoma	Esophagus, total gastrectomy: 1) squamous cell carcinoma, moderately differentiated with I) ulcerative gross type II) extension to the adventitia III) no lymphatic permeation 2) resection margin, proximal, distal and lateral: free of tumor 3) regional lymph nodes, LN1 (0/1), LN3(0/3), LN7(0/1), paraesophageal (0/1), regional LN (1/3) : (1/9): tumor metastasis in one lymph node out of 9 lymph nodes	moderate	T3N1M0 (III)	3.0*3.0
7	B	3,4	m	59	squamous cell carcinoma carcinoma in situ	Esophagus, resection: 1) squamous cell carcinoma, moderately differentiated with I) fungating gross type II) extension to the adventitia with penetration (involving lateral resection margin) III) A few lymphatic invasion 2) carcinoma in situ in the adjacent mucosa 3) resection margin, proximal: Presence of carcinoma in the lymphatics 4) resection margin, distal: free of tumor 5) resection margin, lateral: extension of tumor 6) lymph nodes, subcarinal node (0/7), paraesophageal node (0/2), paratracheal node (1/1), perigastric node (0/8) : (1/18): metastasis in 1 out of 18 lymph nodes 7) fibroadipose tissue labelled as distal resection margin: free of tumor	moderate	T3N1M1 (IV)	5.3*2.5
8	B	5,6	m	54	squamous cell carcinoma dysplasia	Esophagus, esophagogastrectomy: 1) squamous cell carcinoma, moderately differentiated, multifocal with extension to the submucosa and occasional lymphatic permeation 2) multifocal epithelial dysplasia with in situ squamous cell carcinoma 3) resection margins, proximal and distal: free of tumor 4) regional lymph nodes (1/21): metastatic squamous cell carcinoma in 1 out of 21 nodes	moderate	T1N1M0 (II B)	1.7*1.0

A218 : Esophagus cancer tissues

No	Coordinate		Sex	Age	Key word	Histological Diagnosis	Type	TNM Stage	Tumor size (cm)
9	B	7,8	m	69	squamous cell carcinoma	Esophagus, esophagectomy: 1) squamous cell carcinoma, moderately differentiated with I) fungating gross type II) extension to lamina propria and submucosa III) occasional lymphatic permeation 2) Acanthosis glycogenosis, multiple 3) resection margin, proximal and distal: free of tumor 4) lymph node, subcarinal (0/10): free of tumor	moderate	T1N0M0 (I)	2.0*1.5
10	B	9,10	m	55	squamous cell carcinoma	Esophagus, esophagectomy: 1) squamous cell carcinoma (superficial carcinoma), moderately differentiated with I) extension to the lamina propria (mucosa) II) infiltrative gross type 2) resection margin, proximal and distal: free of tumor 3) lymph nodes, labelled as paraesophageal (0/3), No.7 (0/2), omental (0/7) : (0/12): free of tumor	moderate	T1N0M0 (I)	1.8*1.0
11	C	1,2	m	73	squamous cell carcinoma	1. Esophagus with stomach, esophagogastrectomy: 1) moderately differentiated squamous cell carcinoma, with extension to the adventitia and multiple foci of carcinoma in situ. 2) resection margins, proximal: free of tumor 3) resection margins, distal: free of tumor 4) lymph nodes, regional (1/22): metastatic carcinoma 1 out of 22 lymph nodes 2. Adrenal gland, adrenalectomy: nodular hyperplasia. 3. Spleen, splenectomy: free of tumor	moderate	T3N1M0 (III)	5.0*5.0
12	C	3,4	m	63	squamous cell carcinoma squamous cell carcinoma in situ	Esophagus, esophagectomy: 1) squamous cell carcinoma, moderately differentiated, fungating type with extension to adventitia (very close to the lateral surgical margin) 2) resection margin, proximal: 3) focal squamous cell carcinoma in situ 4) resection margin, distal: free of tumor 5) regional lymph nodes, upper mediastinal (0/5), lower paratracheal (0/4), subcarinal (0/4), omental (0/10) : (0/23): free of tumor in all 23 lymph nodes	moderate	T4N0M0 (III)	2.8*1.7

A218 : Esophagus cancer tissues

No	Coordinate	Sex	Age	Key word	Histological Diagnosis	Type	TNM Stage	Tumor size (cm)	
13	C	5,6	m	57	squamous cell carcinoma	Esophagus, esophagectomy: 7 1) squamous cell carcinoma, moderately differentiated with I) ulcerative gross type II) extension to the adventitia III) no lymphovascular invasion IV) foreign body reaction to keratinous material and abscess formation around tumor 2) resection margin, proximal and distal: free of tumor 3) lymph nodes, esophageal (0/3), hilar (0/1), subcrainal (0/6), No.7 (3/6) paratracheal (0/1) : (3/21): metastatic carcinoma in 3 out of 21 lymph nodes	moderate	T2N1M0 (II B)	5.5*5.0
14	C	7,8	m	58	squamous cell carcinoma	Esophagus and stomach, total esophagectomy: Fungating squamous cell carcinoma, moderately differentiated, with 1) size: 4x3x1 cm 2) infiltrative growth pattern 3) penetration of proper muscle layer and extension to adventitia 4) frequent vascular and neural invasion 5) intact resection margins including proximal (esophagus), distal (stomach) and deep margin, see note 6) no lymph node metastasis (subcarinial (0/2), paraaortic ascending (0/2), hilar (0/15), perigastric (0/1) andomentum (0/0)) Note: The tumor is so close to deep resection margin (less than 1 mm) and shows significant vascular invasion.	moderate	T2N1M1 (IV)	4.0*3.0*1.0

A218 : Esophagus cancer tissues

No	Coordinate	Sex	Age	Key word	Histological Diagnosis	Type	TNM Stage	Tumor size (cm)
15	C 9,10	m	75	esophagus squamous cell carcinoma stomach adenocarcinoma stomach signet ring cell carcinoma stomach tubular adenoma	1.Esophagus, total esophagectomy: squamous cell carcinoma, moderately differentiated, with 1) ulceroinfiltrative gross type 2) extension to adventitia 3) occasional lymphatic permeation 4) presence of squamous cell carcinoma in situ in adjacent esophageal mucosa 2.Stomach, total gastrectomy: 1) adenocarcinoma, moderately differentiated I) ulceroinfiltrative gross type II) mixed with signet ring cell carcinoma III) with focal areas of extracellular mucin production IV) with extension to proper muscle layer V) frequent lymphatic permeation 2) two tubular adenomas with low grade dysplasia 3) esophagus, proximal resection margin: focal dysplasia 4) duodenum, distal resection margin: free of tumor 5) regional lymph nodes, No.1 (1/5), No.2 (0/1), mediastinal (0/2) : (1/8): metastatic squamous cell carcinoma in one out of 8 lymph nodes 6) regional lymph node, No.3 (1/8), No.4 (0/0), No.5 (1/1), No.6 (5/6), No.7 (0/3), No.9 (0/8) : (7/26): metastatic adenocarcinoma in 7 out of 26 lymph nodes	moderate	T3N1M0 (III)	4.5*3.5
16	D 1,2	f	64	squamous cell carcinoma	Esophagus, esophagectomy: Infiltrative squamous cell carcinoma, moderately differentiated, with 1) size: 4cm in the greatest diameter 2) diffuse growth 3) penetration of muscle layer and extension into adventitia 4) perineural invasion 5) intact resection margins (proximal and distal (stomach))	moderate	T3N0M0 (II A)	4
17	D 3,4	f	58	squamous cell carcinoma	Esophagus, esophagectomy: 1) squamous cell carcinoma, moderately differentiated with extension to the proper muscle 2) resection margins, proximal and distal: free of tumor 3) lymph node, regional (0/1): free of tumor	moderate	T2N0M0 (II A)	4.5*2.5
18	D 5,6	m	67	squamous cell carcinoma	Esophagus, esophagectomy: 1) squamous cell carcinoma, moderately differentiated with extension to muscularis propria and occasional lymphatic permeation 2) resection margins, proximal and distal: free of tumor 3) regional lymph nodes, No.1 (0/2), No.2 (0/4) : (0/6): free of tumor	moderate	T2N0M0 (II A)	2.3*1.3

A218 : Esophagus cancer tissues

No	Coordinate		Sex	Age	Key word	Histological Diagnosis	Type	TNM Stage	Tumor size (cm)
19	D	7,8	m	77	squamous cell carcinoma	Esophagus, esophagectomy: 1) squamous cell carcinoma, moderately differentiated with extension through proper muscle to the adventitia (T3) 2) leiomyoma, small 3) resection margins, proximal and distal: free of tumor 4) lymph nodes, paraesophageal (0/6) and regional (0/1) : (0/7): free of tumor	moderate	T3N0M0 (II A)	2.5*2.0
20	D	9,10	m	69	squamous cell carcinoma	Esophagus, esophagectomy: polypoid squamous cell carcinoma, moderately differentiated with 1) size: 3.5x2.3x1.4 cm 2) infiltrative growth 3) extension to inner muscle layer 4) frequent lymphovascular invasion 5) intramucosal metastasis 6) intact proximal (esophagus) and distal (stomach) resection margins 7) metastasis to regional lymph nodes (6/14: periesophageal (3/4), and celiac (3/10))	moderate	T2N1M0 (II B)	3.5*2.3*1.4
21	E	1,2	m	61	squamous cell carcinoma	Esophagus, lower, esophagectomy: 1) ulcerative squamous cell carcinoma, moderately differentiated, with I) extension to the periesophageal fat tissue II) lateral margin: free of tumor III) lymphovascular permeation: positive 2) resection margin, proximal, esophageal: free of tumor 3) resection margin, distal, gastric: free of tumor 4) regional lymph nodes: tumor metastasis to 3 out of 10 (3/10), in detail, gastric node (0/1), paraesophageal (0/6), celiac (3/3)	moderate	T3N0M1a (IVA)	1.3*0.6
22	E	3,4	m	56	squamous cell carcinoma	1. Esophagus, segmental resection: superficial squamous cell carcinoma, moderately differentiated with 1) size: 3.0x3.0cm approximately 2) superficial spreading growth with focal invasion to submucosal space 3) vascular invasion 4) intact proximal (esophagus) and distal (stomach) resection margins 5) metastasis to 1 out of 14 celiac lymph nodes 2. Stomach: consistent with Helicobacter pylori gastritis with multifocal atrophy with intestinal metaplasia	moderate	T1N0M1a (IVA)	3.0*3.0

A218 : Esophagus cancer tissues

No	Coordinate	Sex	Age	Key word	Histological Diagnosis	Type	TNM Stage	Tumor size (cm)
23	E 5,6	m	68	squamous cell carcinoma	<p>Esophagus and stomach, Sweet's operation:</p> <p>1) squamous cell carcinoma, moderately differentiated, I) arising from the gastroesophageal junction and extension to the esophagus and cardia of stomach. II) fungating type III) size: 5.5x4.5 cm IV) extension to the subadventitial and subserosal soft tissue (T2, no adventitia involvement) V) scant lymphovascular permeation</p> <p>2) separate mass of esophagus: squamous cell carcinoma, confined the mucosa and muscularis mucosa</p> <p>3. Section margins, proximal and distal: free of tumor</p> <p>4. Regional lymph nodes: free of tumor in all nodes (0/30), in detail, celiac (0/2), left cardiac (0/11), greater curvature (0/0), #1 (0/14), #2 (0/3)</p>	moderate	T2N0M0 (II A)	5.5*4.5
24	E 7,8	m	61	squamous cell carcinoma	<p>Esophagus, esophagectomy:</p> <p>Ulcerofungating squamous cell carcinoma, moderately differentiated, 1) extension to the serosa (adventitia), not exposed to the mediastinum 2) size: 7x2.7 cm 3) lymphovascular permeation: positive 4) resection margin, proximal, esophageal: free of tumor 5) resection margin, distal, gastric: free of tumor 6) regional lymph nodes: tumor metastasis to 2 out of 32 (2/32), in detail, paraesophageal (0/3), celiac (0/1), hilar (0/2), regional (2/26)</p>	moderate	T3N1M0 (III)	7.0*2.7
25	E 9,10	m	60	squamous cell carcinoma	<p>Esophagus, esophagectomy:</p> <p>squamous cell carcinoma, moderately differentiated, probably recurred, see note with 1) size: 2.5x2 cm 2) infiltrative growth 3) transmural involvement from mucosa to subserosal space 4) intact proximal and distal (stomach) resection margins but very close to deep margin 5) metastasis to 2 out of 33 regional lymph nodes (paraesophageal (0/6), right hilar (0/5), greater curvature (0/1), celiac (2/7), AP window (0/5), regional (0/9)) 6) chronic granulomatous inflammation with necrosis, consistent with tuberculosis, in paraesophageal and AP window lymph nodes</p> <p>Note: The tumor was predominantly located in submucosal space without evidence of tumor occurring from the mucosa. Therefore, it could be recurred tumor of laryngeal carcinoma rather than primary esophageal carcinoma.</p>	moderate	T4N0M0 (III)	3.0*2.0*1.0

A218 : Esophagus cancer tissues

No	Coordinate	Sex	Age	Key word	Histological Diagnosis	Type	TNM Stage	Tumor size (cm)
26	F 1,2	m	71	squamous cell carcinoma GIST	Esophagus, esophagectomy: ulcerofungating squamous cell carcinoma, moderately differentiated, with 1) size: 8x3cm 2) infiltrative growth 3) extension to 2/3 of submucosal space 4) no vascular and perineural invasion 5) intact proximal and distal resection margins 6) no metastasis to regional lymph nodes (celiac (0/2), periesophageal (0/7)) 7) gastrointestinal stromal tumor, benign, in upper body of stomach	moderate	T1N0M0 (I)	8.0*3.0
27	F 3,4	m	61	squamous cell carcinoma	1. Esophagus, segmental resection: squamous cell carcinoma, moderately differentiated, ulceroinfiltrative type, with extension into submucosa, with clean surgical margin 2. Stomach, biopsy: free of tumor 3. Esophagus, separately submitted: free of tumor 4. Lymph nodes, dissection: Paraesophageal (0/1), celiac (0/2), lower paraesophageal (0/1), perigastric (0/3) : (0/7): free of tumor	moderate	T1N0M0 (I)	3.0*2.0
28	F 5,6	m	62	squamous cell carcinoma	Esophagus, sweet operation: ulcerofungating squamous cell carcinoma, moderately differentiated, 1) size:4x3. 5cm 2) extension to the submucosa 3) lymphovascular permeation: unceratin 4) resection margin, proximal, esophageal: free of tumor 5) resection margin, distal, gastric: free of tumor 6) Regional lymph nodes: Tumor metastasis to 1 out of 3 (1/3), in detail, celiac node (0/2), lower paraesophageal node (1/1)	moderate	T1N1M0 (II B)	4.0*3.5
29	F 7,8	m	60	squamous cell carcinoma leiomyoma	Esophagus, resection: fungating squamous cell carcinoma, moderately differentiated, 1) size: 7x4.7cm 2) extension to the subserosa(no serosa involved) 3) lymphovascular permeation, present 4) separate mass: Leiomyoma, submucosal 5) resection margin, proximal, esophageal: free of tumor 6) resection margin, distal, gastric: free of tumor 7) regional lymph nodes: tumor metastasis to 2 out of 12 lymph nodes in detail, celiac (0/4),paraesophageal (1/3), regional (1/5)	moderate	T3N1M0 (III)	7.0*4.7

A218 : Esophagus cancer tissues

No	Coordinate		Sex	Age	Key word	Histological Diagnosis	Type	TNM Stage	Tumor size (cm)
30	F	9,10	m	62	squamous cell carcinoma	Esophagus, esophagectomy: 1) squamous cell carcinoma, poorly differentiated, ulceroinfiltrative, extending into muscularis propria without penetration 2) resection margins, proximal and distal: free of tumor 3) lymph node, regional (0/1), paraesophageal (0/4) : (0/5): free of tumor	poorly	T2N0M0 (II A)	2.0*1.3
31	G	1,2	m	66	squamous cell carcinoma	Esophagus and lymph node, esophagectomy with lymph node dissection: ulcerofungating squamous cell carcinoma, poorly differentiated, with 1) extension to the adventitia(not exposed to the mediastinum) 2) size: 3.1x2 cm 3) lymphovascular permeation: scant 4) resection margin, proximal, esophageal: free of tumor 5) resection margin, distal, stomach: free of tumor 6) regional lymph nodes: tumor metastasis to 2 out of 3 (2/3), in detail, lower paraesophageal (0/1), celiac (2/2)	poorly	T3N0M1a (IVA)	3.1*2.0
32	G	3,4	m	73	squamous cell carcinoma	Esophagus, segmental resection: ulcerofungating squamous cell carcinoma, poorly differentiated, with spindle cell and focal neuroendocrine differentiation with 1) size: about 9cm in the largest dimension along the longitudinal axis 2) infiltrative growth 3) invasion to submucosal space 4) vascular invasion 5) resection margins, proximal and distal: free of tumor 6) lymph nodes, paraesophageal (0/3) and No.1 (0/2): free of tumor metastasis in all 5 nodes	poorly	T1N0M0 (I)	9.5
33	G	5,6	m	56	squamous cell carcinoma	Esophagus, esophagectomy: 1) squamous cell carcinoma, poorly differentiated with extension to the adventitia (T3) 2) resection margins, proximal and distal: free of tumor 3) lymph nodes, labelled as greater curvature (0/1), paraesophageal (0/3), IPL (1/9) and regional (0/15) : (1/28): metastatic carcinoma in 1 out of 28 lymph nodes Note: I mmunohistochemical staining results: NSE, Synaptophysin,	poorly	T3N1M0 (III)	7.0*6.0
34	G	7,8	m	69	squamous cell carcinoma	Esophagus, resection margin, frozen biopsy: squamous cell carcinoma involving mucosa and submucosal lymphatic vessel		T2N1M0 (II B)	3.5*2.3*1.4

A218 : Esophagus cancer tissues

No	Coordinate	Sex	Age	Key word	Histological Diagnosis	Type	TNM Stage	Tumor size (cm)
35	G 9,10	m	73	squamous cell carcinoma sarcoma malignant fibrous histiocytoma double cancer	Esophagus : 1) mass, double tumors, sarcoma, most likely malignant fibrous histiocytoma, and squamous cell carcinoma 2) resection margin proximal,esophageal: free of tumor resection margin, distal, G-E junction: free of tumor 3) regional lymph node: free of tumor in all nodes (0/44), followings, mid paraesophageal (0/8), low paraesophageal (0/4), subcarinal (0/11), surrounding nodes (0/21)			3.2*2.4*1.0
36	H 1,2	m	70	squamous cell carcinoma	Esophagus, total esophagectomy: moderately well-differentiated squamous cell carcinoma, predominantly confined to the lamina propria, with focal invasion into the muscularis mucosae, without involvement of the submucosa, muscularis propria, regional lymph nodes or surgical margins	moderately -well	T1N0M1 (IV)	3.0*2.7
37	H 3,4	m	68	squamous cell carcinoma	Esophagus and stomach, esophagectomy and gastrectomy: 1) moderately/well differentiated squamous cell carcinoma with full thickness involvement of the esophageal wall, see note 2) regional lymph nodes, N1 (0/3), N2 (1/3) : (1/6): metastatic squamous cell carcinoma in a lymph node, with extranodal extension, out of six lymph nodes 3) lymph nodes, labelled as "inferior pulmonary ligamental" (0/1) and labelled as "paratracheal" (0/5): pneumoconiotic nodules without involvement of tumor 4) resection margins, proximal (esophagus): free of tumor 5) resection margins, distal (jejunum): free of tumor 6) specimen, labelled as "mediastinal pleural nodule": metastatic squamous cell carcinoma a lymph node with extranodal extension Note: The stomach and the gastrojejunostomy site do not show any residual neoplasm.	moderately -well	T3N1M0 (III)	4.0*3.0
38	H 5,6	m	71	squamous cell carcinoma	Esophagus, esophagectomy: 1) Invasive squamous cell carcinoma, moderately to poorly differentiated, ulcerative, with penetration of entire wall and extension to the underlying resection margin and occasional lymphatic invasion 2) leiomyomatosis 3) resection margins, proximal and distal: free of tumor 4) lymph nodes(0/2): free of tumor metastasis in 2 nodes	moderately to poorly	T3N0M0 (II A)	4.0*1.5

A218 : Esophagus cancer tissues

No	Coordinate	Sex	Age	Key word	Histological Diagnosis	Type	TNM Stage	Tumor size (cm)
39	H 7,8	m	80	squamous cell carcinoma	1. Esophagus, resection: 1) squamous cell carcinoma with focally glandular differentiation (adenosquamous carcinoma), confined to the submucosa but frequent lymphovascular permeation 2) resection margins, proximal and distal: free of tumor 3) regional lymph nodes, regional (1/1), No.2 (0/0), No.3 (0/0), No.7 (0/1), No.8 (0/0), No.11 (0/4): metastatic squamous cell carcinoma in 1 out of 6 nodes 2. Lung, wedge resection: bullae		T1N1M0 (II B)	5.0*4.8
40	H 9,10	m	68	squamous cell carcinoma	Esophagus, esophagectomy: 1) squamous cell carcinoma, multiple with I) Infiltrative gross type II) extension to the lamina propria and submucosa III) no lymphatic permeation IV) multifocal area of epithelial dysplasia, low to high grade 2) glycogenic acanthosis 3) resection margin: free of tumor		T1N0M0 (I)	1
41	I 7			non-neoplastic	non-neoplastic, from A3, 4			
42	I 8			non-neoplastic	non-neoplastic, from E5, 6			
43	I 9			non-neoplastic	non-neoplastic, from D9,10			
44	I 10			non-neoplastic	non-neoplastic, from G1, 2			