

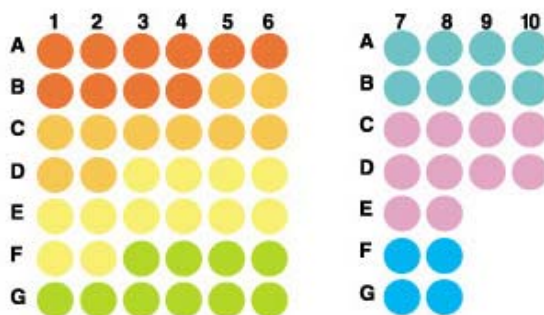
Specifications:

- No. of cases: 30
- Tissue type: Thyroid disease tissues
- No. of spots: 2 spots from each cancer case (60 spots)
4 non-neoplastic spots (4 spots)
- Total spots: 64
- Corresponding normal tissues with cancers: No
- Diameter: 1.0 mm

Documents:

- Product specification: layout, summary of tissue spots
- H&E stained images
- Detailed pathological information

Layout:



- non-neoplastic
- Graves'disease
- Hashimoto's thyroiditis
- Hurthle cell adenoma
- follicular adenoma
- granulomatous thyroiditis
- adenomatous hyperplasia

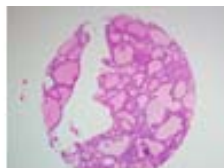
Summary of tissue spots

No.	Coordinate	Sex	Age	Key Word	
1	A	1, 2	f	29	Graves' disease
2		3, 4	m	31	Graves' disease
3		5, 6	m	50	Graves' disease
4		7, 8	f	43	granulomatous thyroiditis
5		9, 10	f	61	granulomatous thyroiditis
6	B	1, 2	f	36	Graves' disease
7		3, 4	m	26	Graves' disease
8		5, 6	f	45	Hashimoto's thyroiditis
9		7, 8	f	40	granulomatous thyroiditis
10		9, 10	f	47	granulomatous thyroiditis
11	C	1, 2	f	55	Hashimoto's thyroiditis
12		3, 4	f	56	Hashimoto's thyroiditis
13		5, 6	f	46	Hashimoto's thyroiditis
14		7, 8	f	35	adenomatous hyperplasia
15		9, 10	f	18	adenomatous hyperplasia
16	D	1, 2	f	48	Hashimoto's thyroiditis
17		3, 4	f	77	Hurthle cell adenoma
18		5, 6	f	34	Hurthle cell adenoma
19		7, 8	f	29	adenomatous hyperplasia
20		9, 10	f	45	adenomatous hyperplasia
21	E	1, 2	f	48	Hurthle cell adenoma
22		3, 4	f	66	Hurthle cell adenoma
23		5, 6	f	56	Hurthle cell adenoma
24		7, 8	f	59	adenomatous hyperplasia
25	F	1, 2	f	64	Hurthle cell adenoma
26		3, 4	f	66	follicular adenoma
27		5, 6	f	37	follicular adenoma
28		7			non-neoplastic
29		8			non-neoplastic
30	G	1, 2	f	35	follicular adenoma
31		3, 4	m	39	follicular adenoma
32		5, 6	f	25	follicular adenoma
33		7			non-neoplastic
34		8			non-neoplastic

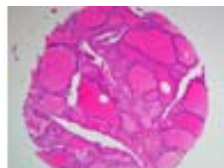
QC sheet_LOT#122120308281
Haematoxylin and Eosin staining



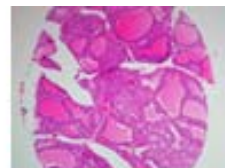
A1



A2



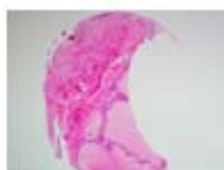
A3



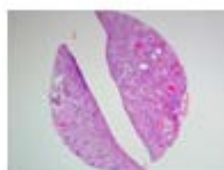
A4



A5



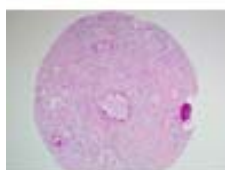
A6



A7



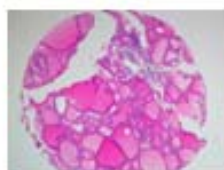
A8



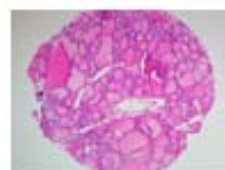
A9



A10



B1



B2



B3



B4



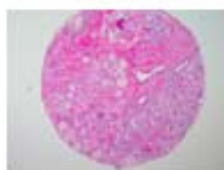
B5



B6



B7



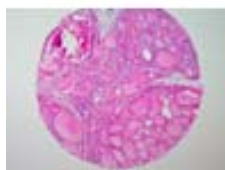
B8



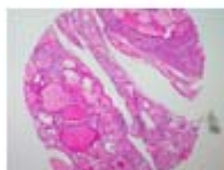
B9



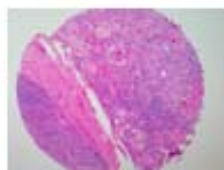
B10



C1



C2

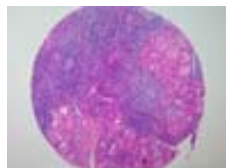


C3

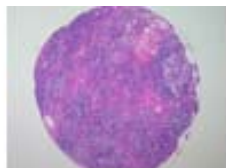


C4

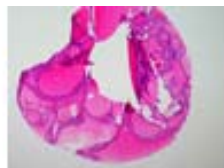
QC sheet_LOT#122120308281
Haematoxylin and Eosin staining



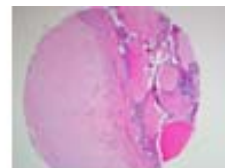
C5



C6



C7



C8



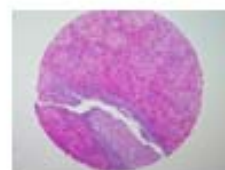
C9



C10



D1



D2



D3



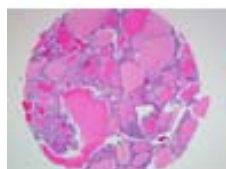
D4



D5



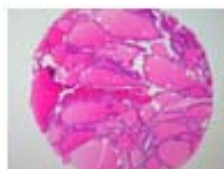
D6



D7



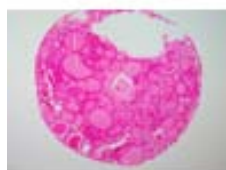
D8



D9



D10



E1



E2



E3



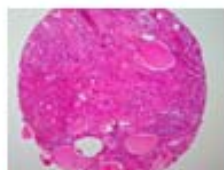
E4



E5



E6



E7



E8

QC sheet_LOT#122120308281
Haematoxylin and Eosin staining



F1



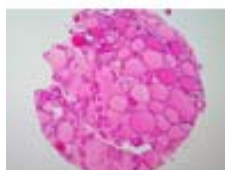
F2



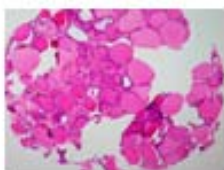
F3



F4



F5



F6



F7



F8



G1



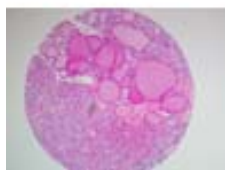
G2



G3



G4



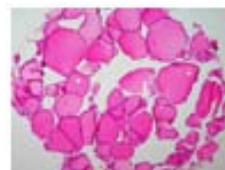
G5



G6



G7



G8

A401: Thyroid disease tissues

No.	Coordinate		Sex	Age	Key Word	Histological Diagnosis
1	A	1, 2	f	29	Graves' disease	Thyroid gland, bilateral, subtotal thyroidectomy: diffuse hyperplasia, consistent with Graves' disease
2	A	3, 4	m	31	Graves' disease	Thyroid gland, bilateral, subtotal thyroidectomy: diffuse hyperplasia with involutinal change, Grave's disease
3	A	5, 6	m	50	Graves' disease	Thyroid gland, thyroidectomy: diffuse hyperplasia, consistent with Graves' disease
4	A	7, 8	f	43	granulomatous thyroiditis	Thyroid gland, frozen, thyroidectomy: diffuse fibrosis with scattered granulomatous inflammation consistent with granulomatous thyroiditis (DeQuervain's thyroiditis)
5	A	9, 10	f	61	granulomatous thyroiditis	Thyroid gland, lobectomy: granulomatous (de Quervain's) thyroiditis
6	B	1, 2	f	36	Graves' disease	Thyroid gland, bilateral, total thyroidectomy: diffuse hyperplasia (Graves' disease)
7	B	3, 4	m	26	Graves' disease	Thyroid gland, subtotal thyroidectomy: consistent with Graves' disease
8	B	5, 6	f	45	Hashimoto's thyroiditis	Thyroid gland, isthmus, biopsy: 1. Hashimoto's thyroiditis 2. Consistent with nodular goiter with fibrosis
9	B	7, 8	f	40	granulomatous thyroiditis	Thyroid gland, thyroidectomy: granulomatous (de Quervain's) thyroiditis, see note Note: Ziehl-Neelsen's stain reveals no acid-fast bacilli.
10	B	9, 10	f	47	granulomatous thyroiditis	Thyroid, thyroidectomy: 1. Granulomatous thyroiditis, see note. 2. Regional lymph nodes: Reactive hyperplasia (0/2) Note: AFB stain reveals no acid-fast bacilli. The possibility of subacute granulomatous thyroiditis is suggested.
11	C	1, 2	f	55	Hashimoto's thyroiditis	Thyroid gland, site unstated, lobectomy: 1. Hashimoto's thyroiditis 2. lymph nodes, regional (0/14): free of tumor 3. presence of thymic tissue
12	C	3, 4	f	56	Hashimoto's thyroiditis	Thyroid gland, right, lobectomy: consistent with Hashimoto's thyroiditis

A401: Thyroid disease tissues

No.	Coordinate		Sex	Age	Key Word	Histological Diagnosis
13	C	5, 6	f	46	Hashimoto's thyroiditis	Thyroid gland, right, lobectomy: 1. Hashimoto's thyroiditis 2. lymph nodes, right lobe (1/3) and No.6 and 7 left (3/11): metastatic papillary carcinoma in 4 out of 14 nodes
14	C	7, 8	f	35	adenomatous hyperplasia	Thyroid gland, right, lobectomy: adenomatous hyperplasia
15	C	9, 10	f	18	adenomatous hyperplasia	Thyroid gland, site unstated, lobectomy: adenomatous hyperplasia
16	D	1, 2	f	48	Hashimoto's thyroiditis	Thyroid gland, bilateral, total thyroidectomy: hashimoto's thyroiditis
17	D	3, 4	f	77	Hurthle cell adenoma	Thyroid gland, frozen biopsy: hurthle cell adenoma
18	D	5, 6	f	34	Hurthle cell adenoma	Thyroid, thyroidectomy and frozen biopsy: hurthle cell adenoma
19	D	7, 8	f	29	adenomatous hyperplasia	Thyroid gland, right, lobectomy: adenomatous hyperplasia
20	D	9, 10	f	45	adenomatous hyperplasia	Thyroid gland, right, excision: adenomatous hyperplasia
21	E	1, 2	f	48	Hurthle cell adenoma	Thyroid, lobectomy (FS): hurthle cell (oxyphilic cell) adenoma
22	E	3, 4	f	66	Hurthle cell adenoma	Thyroid gland, left, thyroidectomy: hurthle cell adenoma
23	E	5, 6	f	56	Hurthle cell adenoma	Thyroid gland, left, thyroidectomy: hurthle cell adenoma
24	E	7, 8	f	59	adenomatous hyperplasia	Thyroid gland, right, lobectomy: adenomatous hyperplasia
25	F	1, 2	f	64	Hurthle cell adenoma	Thyroid gland, left, thyroidectomy: hurthle cell adenoma (oncocyctic adenom)
26	F	3, 4	f	66	follicular adenoma	Thyroid gland, right, lobectomy: follicular adenoma
27	F	5, 6	f	37	follicular adenoma	Thyroid gland, left, lobectomy: follicular adenoma

A401: Thyroid disease tissues

No.	Coordinate	Sex	Age	Key Word	Histological Diagnosis
28	F 7			non-neoplastic	Non-neoplastic region from A210 coordinates A1, 2
29	F 8			non-neoplastic	Non-neoplastic region from A210 coordinates B3, 4
30	G 1, 2	f	35	follicular adenoma	Thyroid gland, right, lobectomy: follicular adenoma
31	G 3, 4	m	39	follicular adenoma	Thyroid gland, thyroidectomy: 1. follicular adenoma 2. adenomatous hyperplasia
32	G 5, 6	f	25	follicular adenoma	Thyroid gland, bilateral, subtotal thyroidectomy: follicular adenoma
33	G 7			non-neoplastic	Non-neoplastic region from A210 coordinates A3, 4
34	G 8			non-neoplastic	Non-neoplastic region from A210 coordinates B1, 2