

(formalin fixed)

For research use only

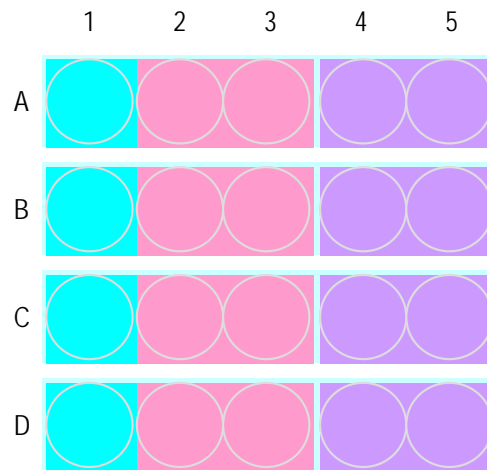
Specifications:

- No. of cases: 4
- Tissue type: Colon cancer tissues_liver metastasis with corresponding normal tissues
- No. of spots: 4 spots from each cancer case (16 spots)
4 non-neoplastic spots (4 spots)
- Total spots: 20
- Corresponding normal tissues with cancers: Yes
- Diameter: 1.5 mm

Documents:

- Product specification: layout, summary of tissue spots
- H&E stained images
- Detailed pathological information

Layout:



- : colon, non malignant
- : colon, tumor
- : liver, metastatic tumor
- ● ● ● : one patient case

(formalin fixed)

For research use only

Summary of tissue spots

No.	Coordinate	Sex	Age	Key word
1	A	f	69	non-noeplastic from A2,3
				colon: adenocarcinoma
				liver metastasis form A2,3
2	B	f	56	non-noeplastic from B2,3
				colon: adenocarcinoma
				liver metastasis form B2,3
3	C	m	76	non-noeplastic from C2,3
				colon: adenocarcinoma
				liver metastasis form C1
4	D	m	44	non-noeplastic from D2,3
				colon: adenocarcinoma
				liver metastasis form D2,3

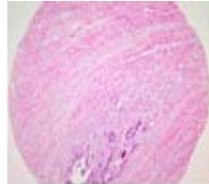
(formalin fixed)

For research use only

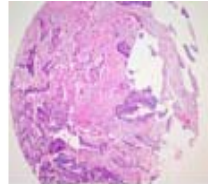
**QC sheet_LOT#132150501311
Hematoxylin and Eosin staining**



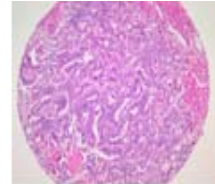
A1



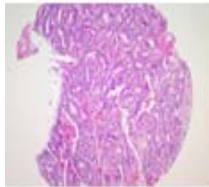
A2



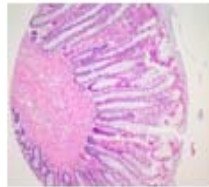
A3



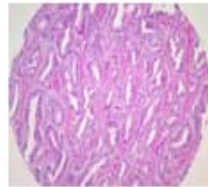
A4



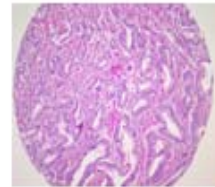
A5



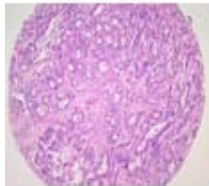
B1



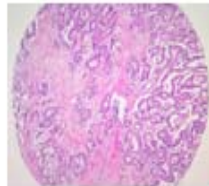
B2



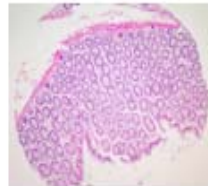
B3



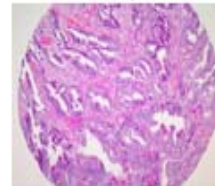
B4



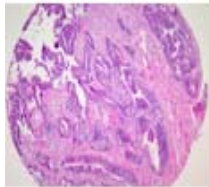
B5



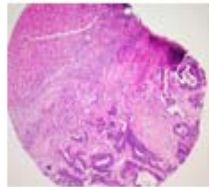
C1



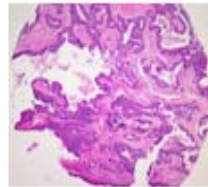
C2



C3



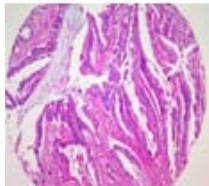
C4



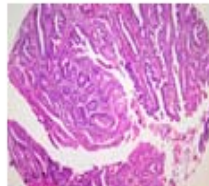
C5



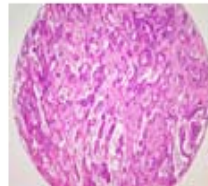
D1



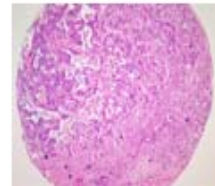
D2



D3



D4



D5

A713(II): Colon cancer tissues _liver metastasis

No.	Coordinate	Sex	Age	Key word	Differentiation	Dukes stage	liver metastasis (cm)	colon operation	Liver operation	Lymph node	
1	A	f	69	non-noeplastic from A2,3							
				2,3	colon: adenocarcinoma	moderate	C2		low anterior resection		8/11
				4,5	liver metastasis form A2,3			1.6		biopsy	
2	B	f	56	non-noeplastic from B2,3							
				2,3	colon: adenocarcinoma	well	C2		low anterior resection		14/25
				4,5	liver metastasis form B2,3			3/0.7/0.5/0.4		left lobectomy	
3	C	m	76	non-noeplastic from C2,3							
				2,3	colon: adenocarcinoma	well	B2		segmental resection		
				4,5	liver metastasis form C1			1		wedge resection	
4	D	m	44	non-noeplastic from D2,3							
				2,3	colon: adenocarcinoma		C1		low anterior resection		1/9
				4,5	liver metastasis form D2,3			5-RFA		right/ left lateral segmentectomy	